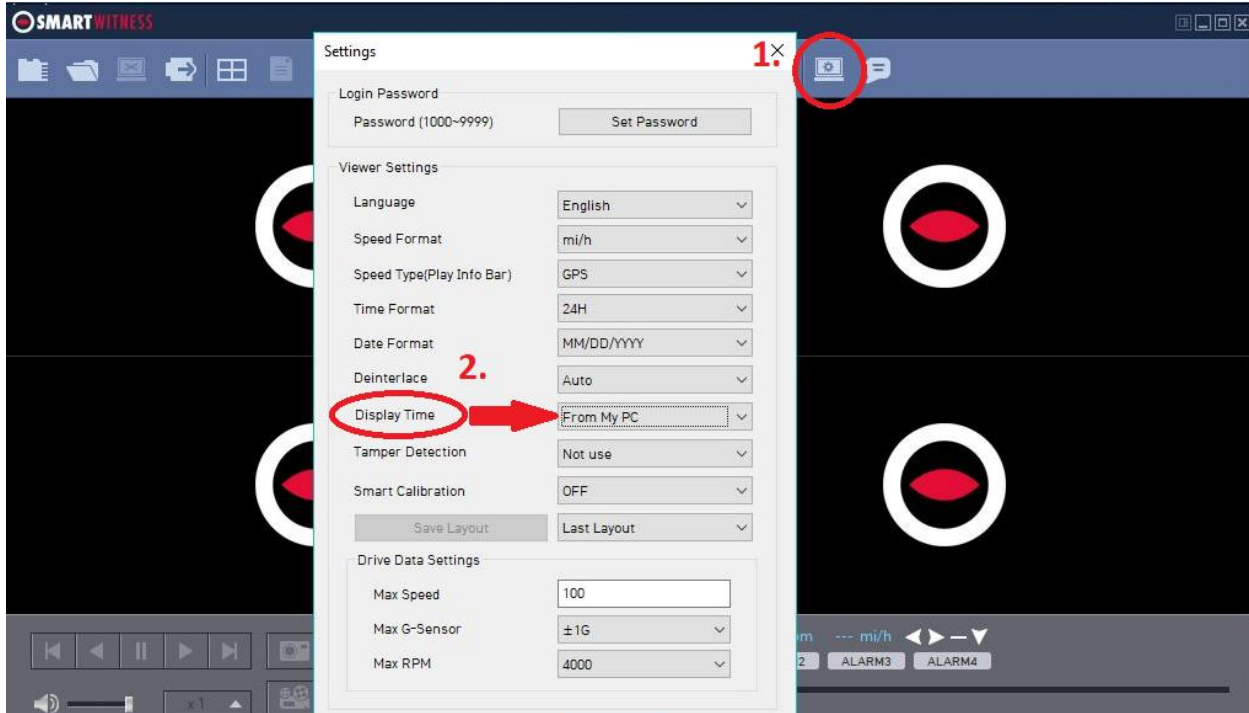
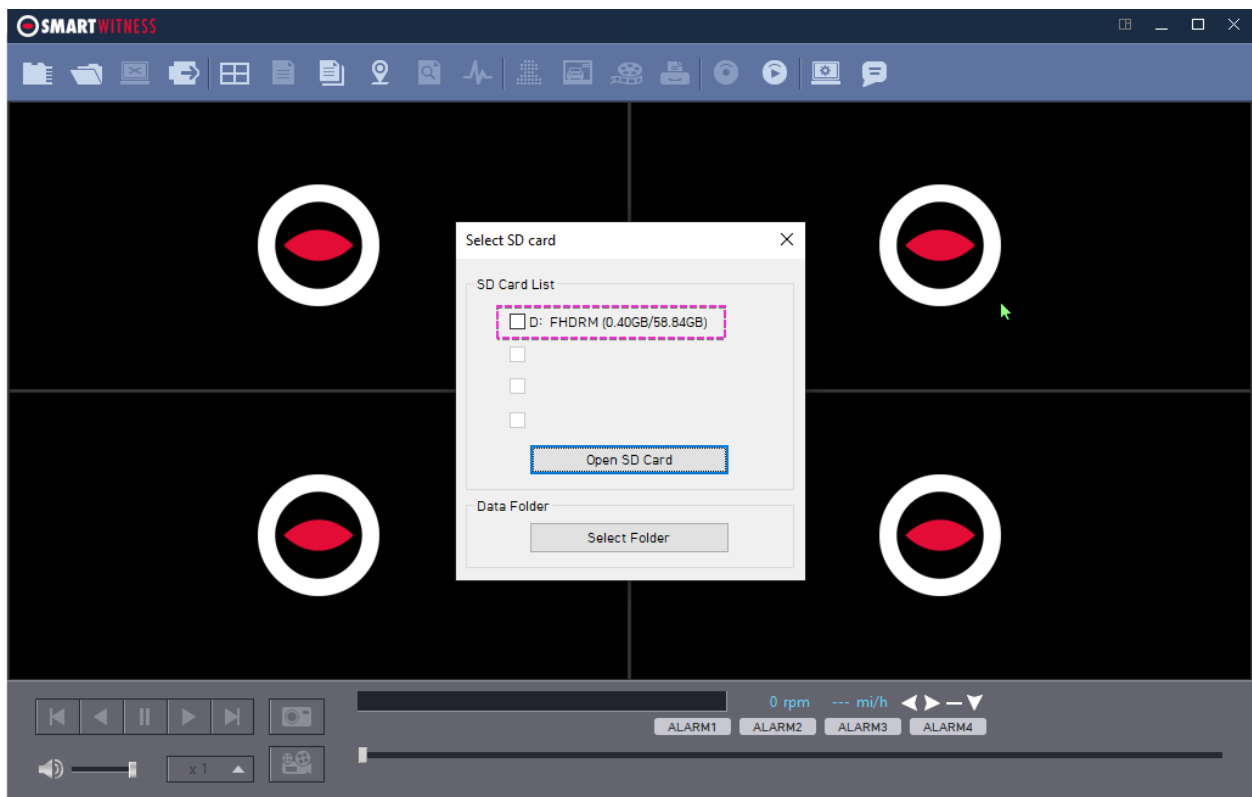
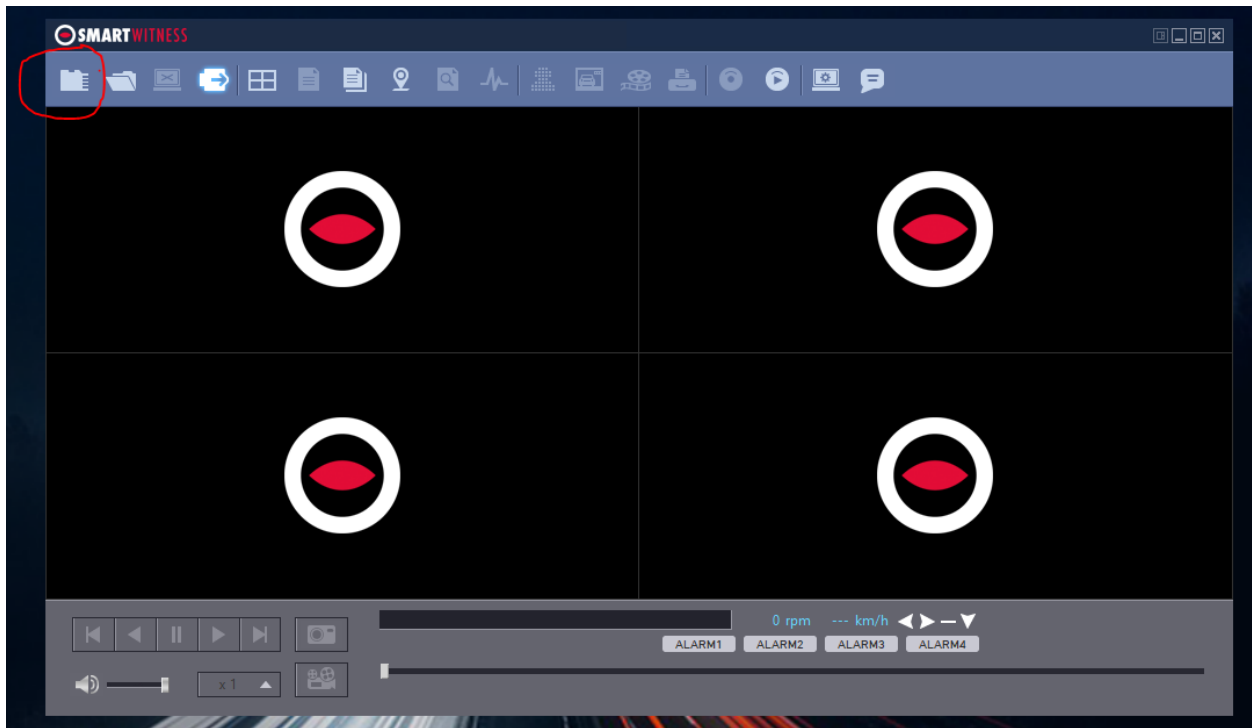


## Manual retrieval of footage

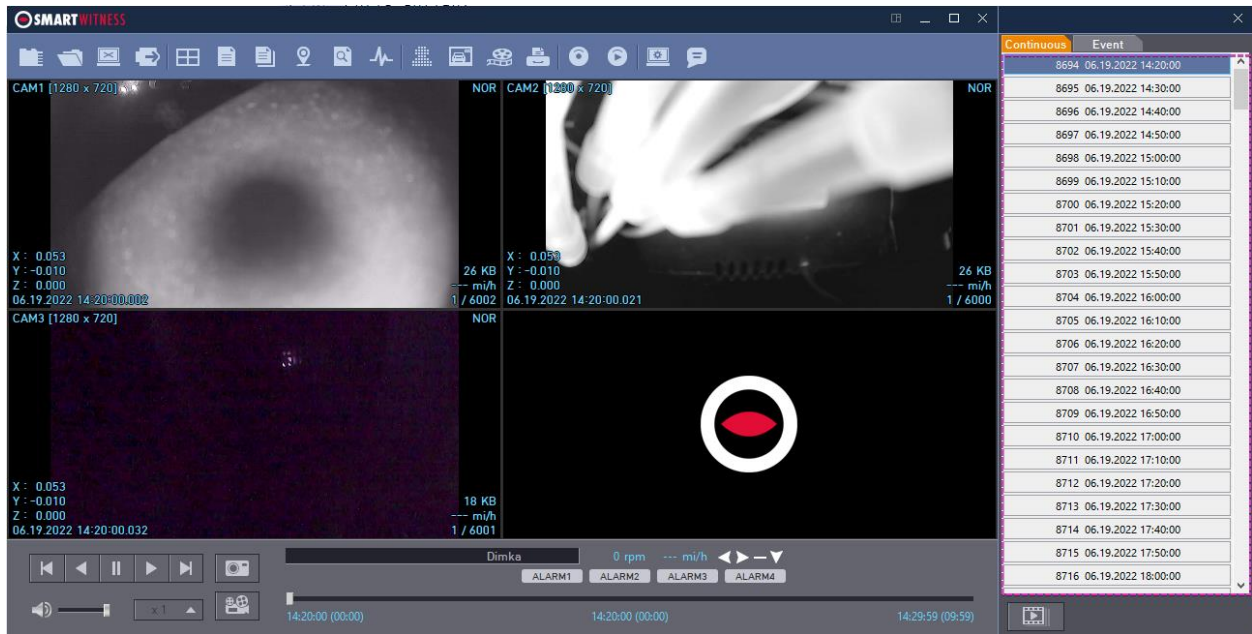
- Power off the unit,(lights off) take out the SD card and plug it into your PC/Laptop.
- Download the [SD Viewer](#) and install it. Here's the [SD Viewer guide](#).
- Press the settings button and change the display time to "From my PC". This way the footage will be converted to your local time zone (see screenshot)



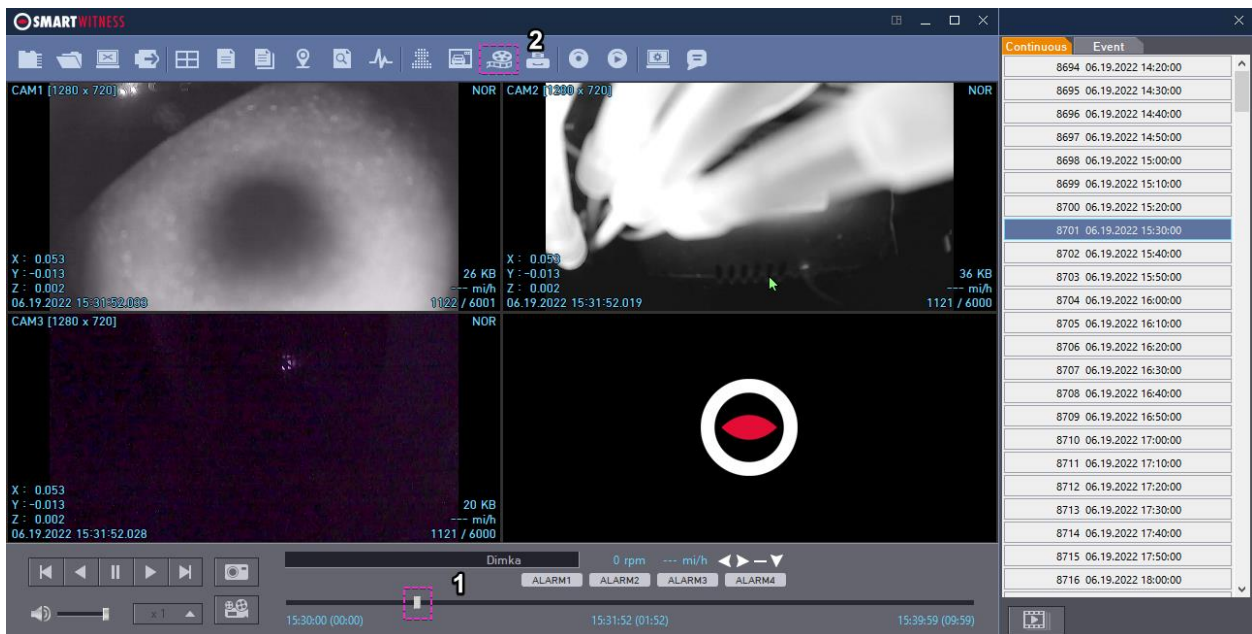
- After that, press the "Select SD Card" button (see screenshot) and select the SD card.



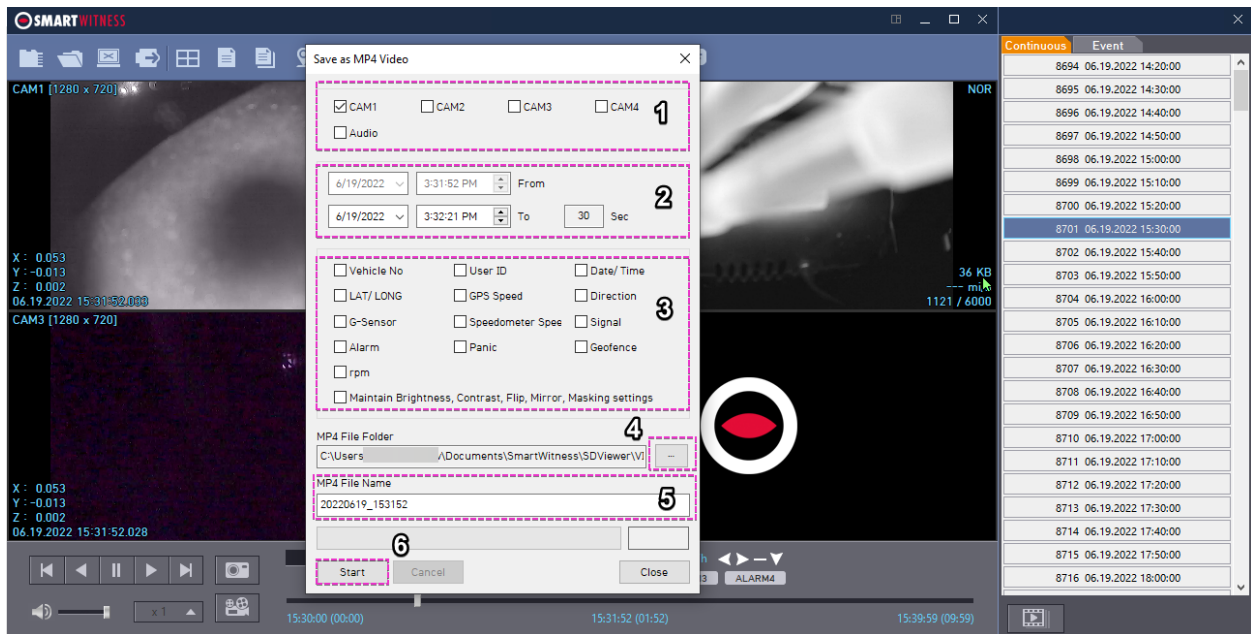
- You will see a list of videos on the right side (see screenshot).



- To export the video, please select it, move the slider (1) to adjust the starting position of the video and press the "Save MP4 Video" button (2) (see screenshot).



- Select the cameras that you want footage from, and select audio if you want audio (1)
- Select the ending position of the video (2)
- Select any of the attributes to be shown on the exported video (e.g. vehicle number, speed, date/time, etc.) (3)
- Select the output folder. The video will be exported there (4)
- Write the file name (5)
- Press Start (6)



- You can find the extracted video in the output folder.