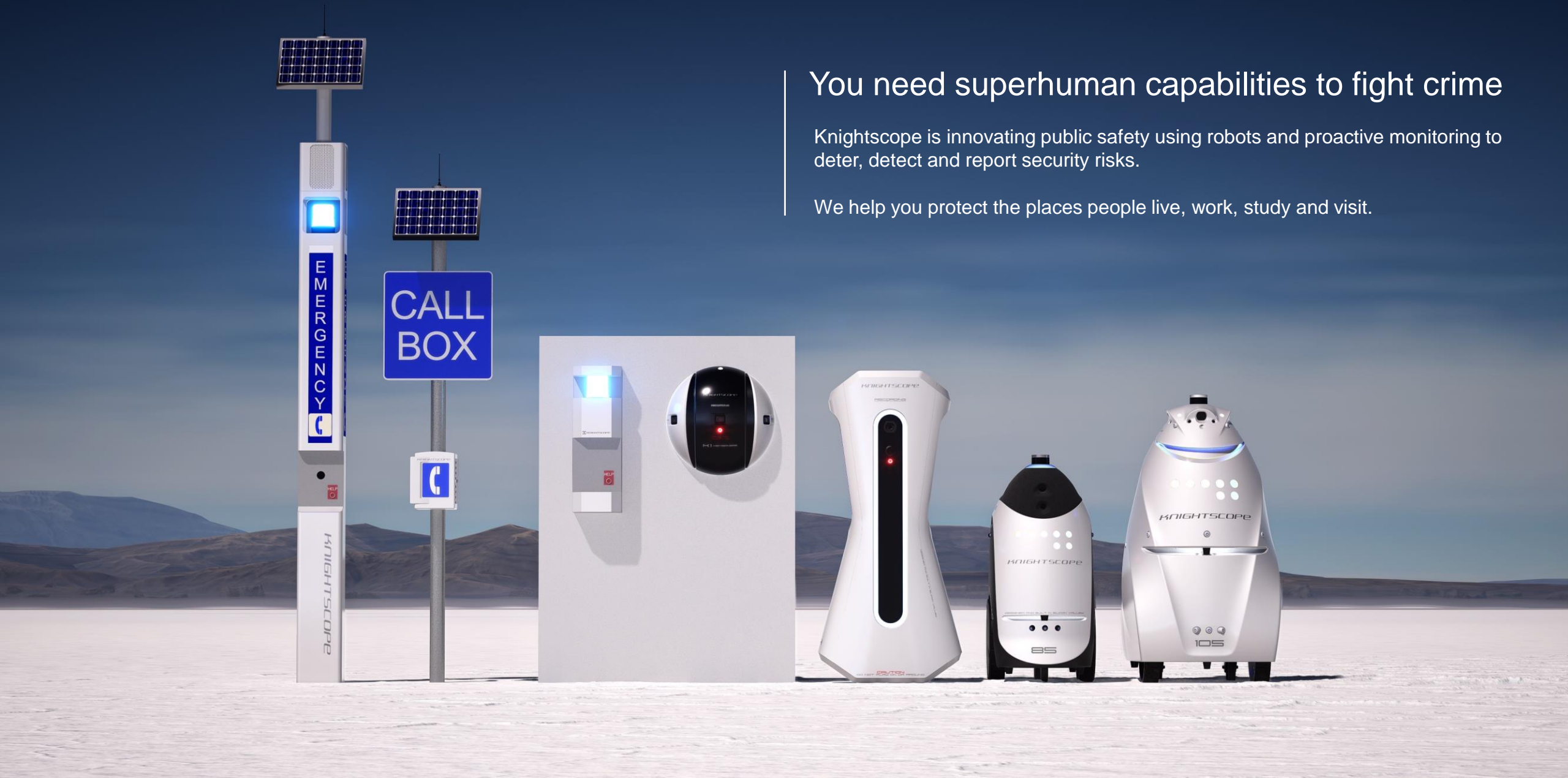


You need superhuman capabilities to fight crime

KnightScope is innovating public safety using robots and proactive monitoring to deter, detect and report security risks.

We help you protect the places people live, work, study and visit.



ABOUT US

- 30+ Years Experience
- Headquarters in Mountain View, CA
Offices in: NY & TX
- Knightscope is the OEM
- American made products
- Proud Verizon and AT&T partner
- NCPA approved vendor

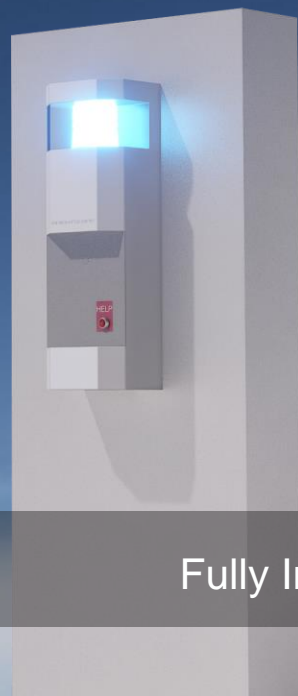


KNIGHTSCOPE EMERGENCY COMMUNICATION SYSTEMS

K1 BLUE LIGHT E-PHONE

K1 CALL BOX

K1 BLUE LIGHT TOWER



Fully Integrated Voice and Data Calling Module Included with All Our Phones

WIRELESS TECHNOLOGY

Cut the Cord

Cut Costs

Install Anywhere

- SOLAR POWER (AC Power Option)
 - 7 Days of Battery Operation
 - Green Energy Source
 - Minimal Operating Costs
- WIRELESS CALLING
 - 4G Cellular Calling
 - Verizon and AT&T Certified Voice/Data Modules included
 - Iridium Satellite



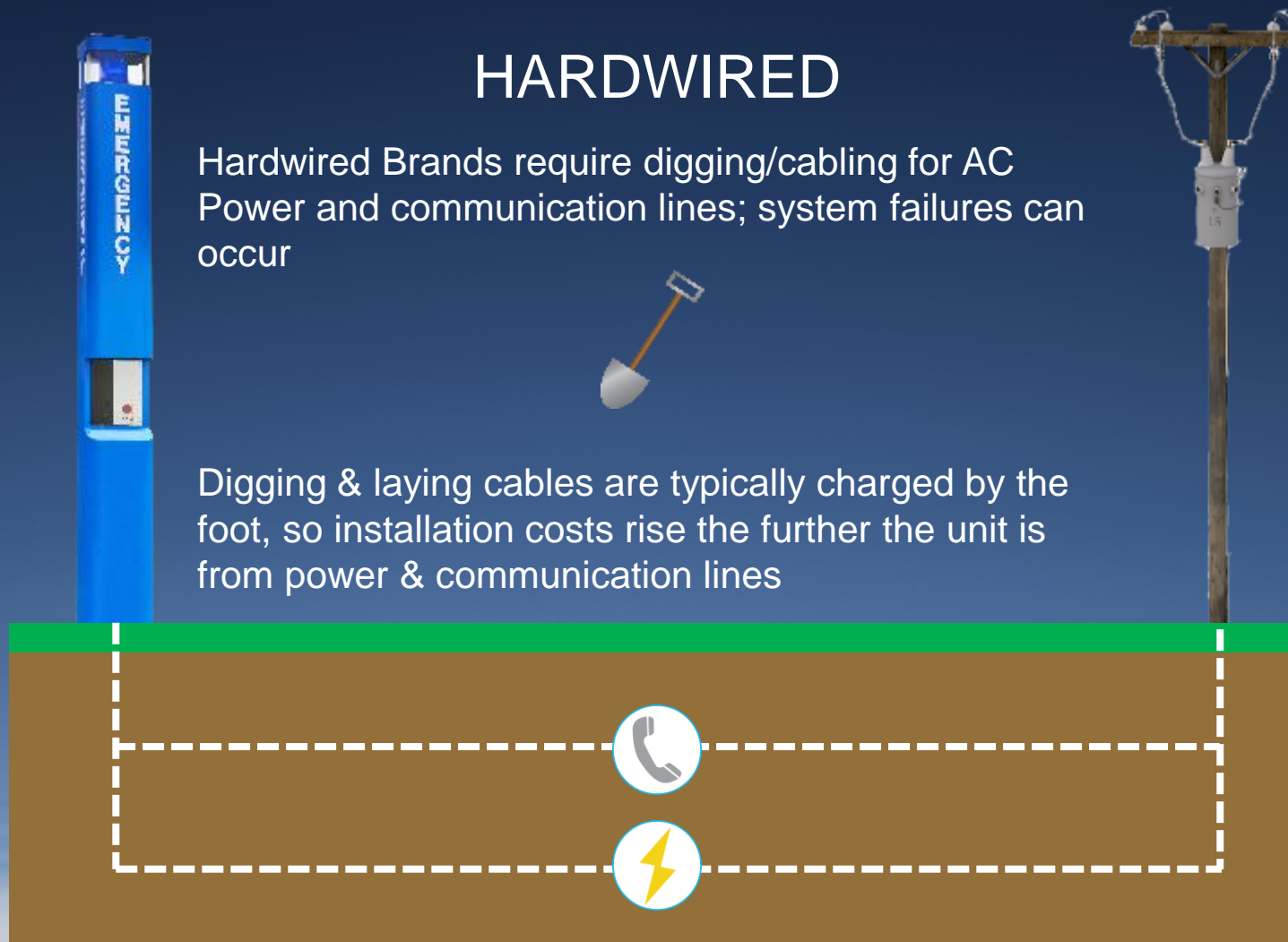
WIRELESS VS HARDWIRED

HARDWIRED

Hardwired Brands require digging/cabling for AC Power and communication lines; system failures can occur



Digging & laying cables are typically charged by the foot, so installation costs rise the further the unit is from power & communication lines



WIRELESS VS HARDWIRED

- Knightscope wireless emergency phones don't require costly trenching, cabling, or conduit
- Cost effectively add emergency phones, even in remote areas





K1 Blue Light Tower & E-Phone

1. AC or Solar Powered System
2. Optional *Wireless* Mass Notification Speaker System on Tower only
3. Blue or White Strobe
4. Custom Label, Color and Branding
5. Faceplate with Light
 - a) 4G Wireless Radio or Iridium Satellite
 - b) Integrated Electronics
 - c) Self-Diagnostic Software
 - d) Location Description Nameplate
 - e) 40-AH back-up battery on Tower, 17-AH on E-Phone
 - f) Optional Faceplate Camera
 - g) One or two-button option



MODULAR DESIGNS



MASS NOTIFICATION SYSTEM



- Compatible with Tower only
- No License Fees
- Broadcast pre-recorded messages using your existing Mass Notification Service
 - Has Dual Functionality
 - Wide Area Broadcast
 - Individual Broadcast



FACEPLATE CAMERA

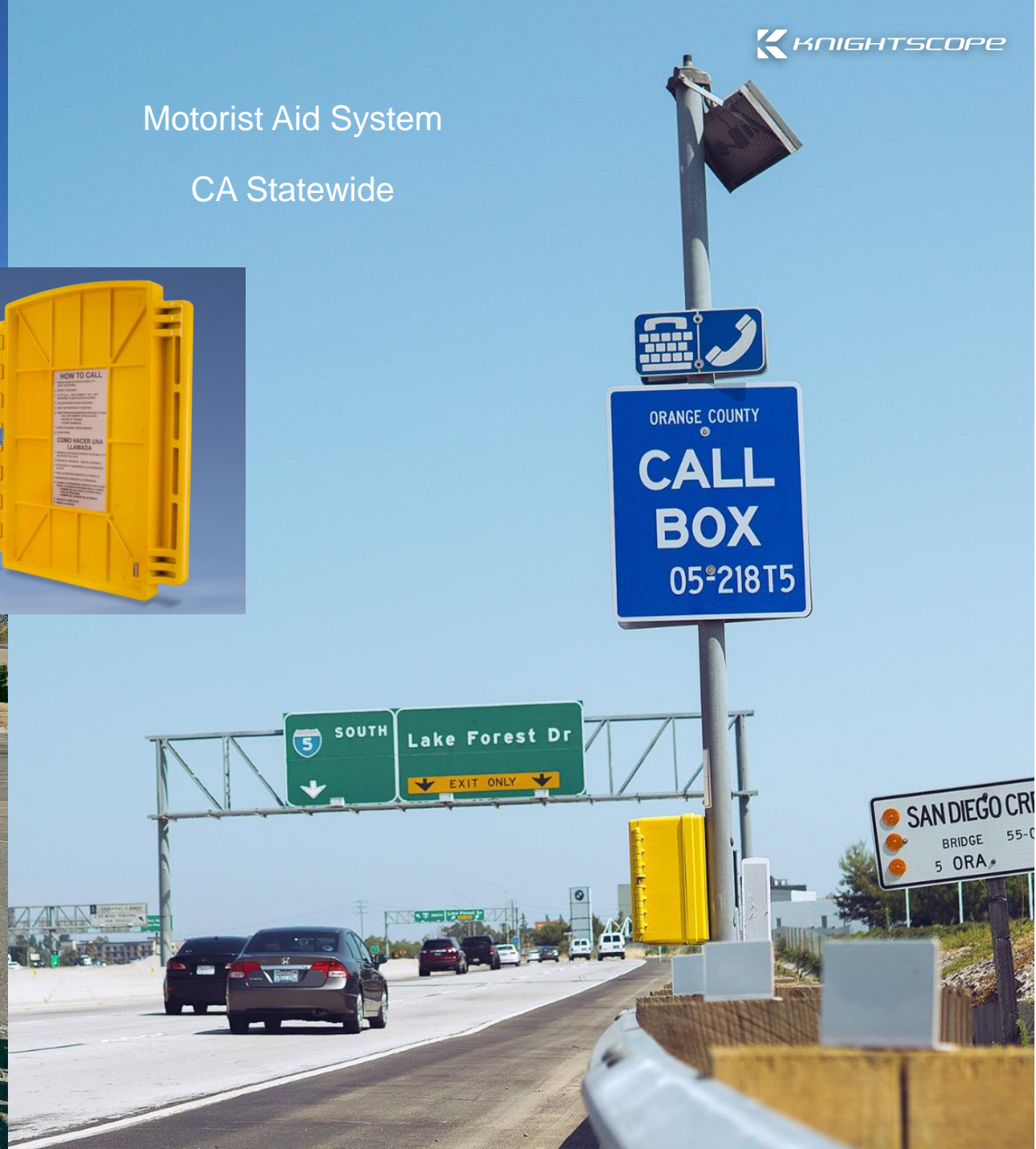
- Compatible with Tower & E-Phone
- Snaps pictures during call box use
- Pictures and recorded audio are accessible for review



Bronx Hospital
New York City, NY



Motorist Aid System
CA Statewide



CONVERTING EXISTING EMERGENCY PHONES

- Upgrade other blue-light-style phones and call boxes to function like Knightscope's Emergency Phones
- Available for Code Blue, Talkaphone, Gai-Tronics, and Rath
- Use your existing tower or housing
- Easily convert to cellular communication
- Monitor key functions with real-time, self-diagnostic software



Code-Blue Retrofit

KNIGHTSCOPE CLOUD ADMIN (KCA)

KCA DAILY EMAIL

- Provides current status of key functions
- Confirmation phones are functioning properly
- Eliminate the need for personnel to physically check each phone weekly, daily
- Immediately address service needs

Region :

CISD Conroe ISD

Legend :

High Priority

Medium Priority

Low Priority

Operational Statistics :

Total Call Boxes 20 (20 Active + 0 Inactive)

19 of 20 Operational

1 of 20 Service Required

0 of 20 Degraded Operations

0 of 20 Informational

0 of 20 Inactive/Bagged

Alarms Registered 2023-04-11

ANI	Date	Box Number	Location	Alarm	Duration
1002	04-01-2023		Buddy Moorhead Stadium Home	Fail to Check In	9d 12hr 59min

Thank you,

Knightscope Team

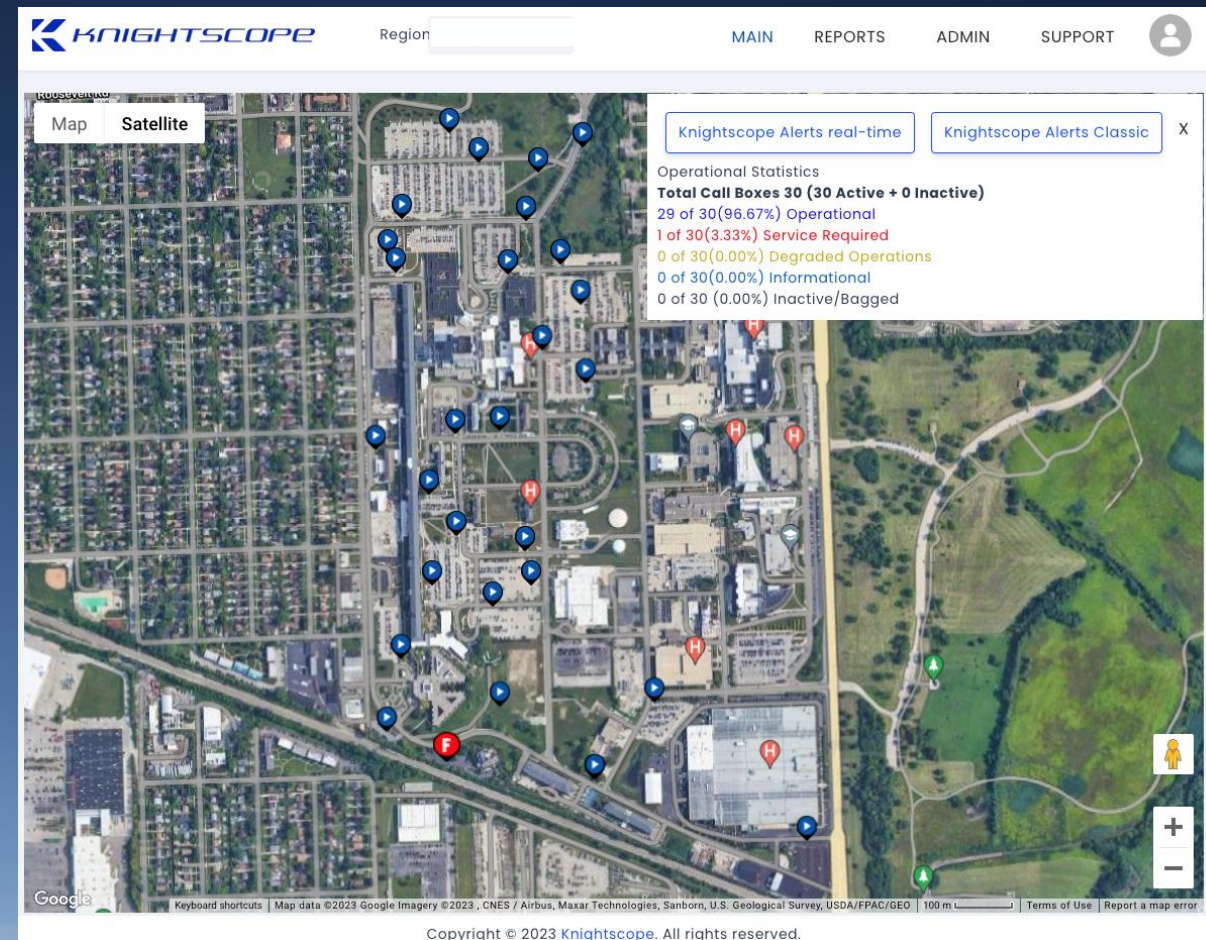
DO NOT REPLY. This is an auto-generated email. If you are not interested in receiving further emails, please login to Knightscope Bluelight Cloud Admin (KBCA) > Go to your profile and unsubscribe.

Copyright © [Knightscope](#). All rights reserved.

KNIGHTSCOPE CLOUD ADMIN (KCA)

REAL-TIME SELF-DIAGNOSTIC SOFTWARE

1. Shows mapping of your locations
2. Has details of each call box with ANI, location description and more
3. Call box reports status of key components to KCA
 - a) Fail to check-in
 - b) Low battery
 - c) Cellular signal issues
 - d) Off-line
4. If maintenance issues occur, we work with you to resolve them



KCA Real-Time Alerts

[MAIN](#)
[REPORTS](#)
[ADMIN](#)
[SUPPORT](#)

You are screen sharing Stop Share

Knightscope Alerts Real-time

Knightscope Alerts Real-time Details
22-05-2023 10:23:33 PST

Region: HINESVET

Operational Statistics

Total Call Boxes 30 (30 Active + 0 Inactive)

29 of 30 (96.67%) Operational

1 of 30 (3.33%) Service Required

0 of 30 (0.00%) Degraded Operations

0 of 30 (0.00%) Informational

0 of 30 (0.00%) Inactive/Bagged

Alert Statistics

0 of 30 (0.00%) Tilt Alarm

0 of 30 (0%) Voice Call Failure Alarm

0 of 30 (0%) TTY Call Failure Alarm

1 of 30 (3.33%) Failed to Check-in

23 of 30 (76.67%) Primary FTC

2 of 30 (6.67%) Secondary FTC

0 of 30 (0.00%) Battery Alarm

Alert Statistics

0 of 30 (0.00%) Power System Alarm

0 of 30 (0.00%) Audio Alarm

0 of 30 (0.00%) Front Panel Lamp Alarm

0 of 30 (0.00%) TTY Alarm

0 of 30 (0.00%) Front Door Alarm

0 of 30 (0.00%) Authorized Entry

0 of 30 (0.00%) Inner Door Alarm

Ani

Alert

FTC Details

Hines Veterans Admi
ANI
All
+

Search
Reset
Export
Back

INFO	TIME	SUB-REGION	ANI	STATUS CODE	FIRMWARE	ALERT	INDICATION	DURATION	BOX NUMBER	CALL IN TIME	LOCATION	ACTION
	05-22-2023 05:01:24 CST	None	3275	9999		Report Generation FTC	Tech "4G", APN="NXTGENPHONE" Low RSSI -75, Low RSRQ -11	63d 6hr 21min	Tower 11	09:02:20 AM CST	Hines VAH-Ronald McDonald House	
	05-22-2023 09:15:31 CST	None	3274	0400	Ap_CB62189224.Hex	Clear FTC Programming Call		0d 2hr 7min	Tower 15	09:00:47 AM CST	Hines VAH-Building 215 At Crosswalk	
	05-22-2023 09:36:47 CST	None	3282	0400	Ap_CB62189224.Hex	Clear FTC Programming Call		0d 1hr 45min	Tower 19	09:13:15 AM CST	Hines VAH-Parking Lot N	
	05-21-2023 09:47:06 CST	None	3265	1000	Ap_CB62189224.Hex	Clear FTC Report Call		1d 1hr 35min	Tower 4	08:46:45 AM CST	Hines VAH-SCI Parking Lot	
	05-21-2023 09:53:23 CST	None	3269	1000	Ap_CB62189224.Hex	Clear FTC Report Call		1d 1hr 29min	Tower 6	08:52:59 AM CST	Hines VAH-North Parking Lot C 113	
			3268			Clear FTC					Hines VAH-	

Product Comparison

ITEM	CASE Systems	Talkaphone	Code Blue	Gai-Tronics
Self Diagnostic Cellular Monitoring and Maintenance Software included	Yes	No	No	No
Full Duplex over Cellular	Yes	No	No	No
Low battery alert	Yes	No	No	Yes
Trenching and concrete required for tower install	No	Yes	Yes	Yes
Lift equipment required for installing tower	No	Yes	Yes	Yes
Annual licensing fees	No	Yes	Yes	No
Mass Notification over Cellular	Yes	No	No	No
Cable distance limitations	No	Yes	Yes	Yes
VoIP licensing fees	No	Yes	Yes	Yes
Satellite calling option	Yes	No	No	No
Speaker volume control through DTMF commands	Yes	No	No	No
Tactile button	Yes	Yes	No	Yes



FOUNDATION CHOICES

DART



- Used for soft ground installations
- The DART is a foundation screw designed by Knightscope for rapid installation
- A Bobcat drives the DART deep into the ground, creating a solid base to keep the tower upright. A molded base and gravel are added on top for aesthetics

CEMENT ANCHORS



- For new or existing concrete
- The Hilti Bolt foundation uses 4 J-bolt screws as the foundation for the tower
- If there is existing concrete in place, 4 holes need to be drilled for the J-bolts to be inserted
- Otherwise, the base is secured in place with a rebar cage surrounding the J-bolts and quick setting concrete



KNIGHTSCOPE ADVANTAGE FULLY INTEGRATED SYSTEM

- Products manufactured in the USA
- Shipping throughout USA
- KCA software monitors key system features
- Technical support M – F (8:00am – 5:00pm PST)
- One (1) year manufacturer's warranty on parts and labor
- Extended Warranty options

SUCCESES



K1 BLUE LIGHT E-PHONE

Pole Mounted



K1 BLUE LIGHT TOWER

With Camera Arm

Conroe ISD

Conroe, TX



POSITIVELY NO
CLES, WAGONS,
RS, SKATEBOARDS,
IKES, 3 WHEELERS,
ELERS, OR PETS
OWED INSIDE
IS FACILITY

EMERGENCY

TICKET

Tomball ISD

Tomball, TX



UCSD

San Diego, CA





KNIGHTSCOPE

Katy ISD

Katy, TX

Brooks City Base

San Antonio, TX

EP GOLBOW ELM

911

CALL
CONNECTED

CASE
SYSTEMS, INC.
www.casesystemsinc.com

Capital Metro

Austin, TX



K NIGHTSCOPE

Bunker Hill

Boston, MA



Texas State
San Marcos, TX



Winter Park

Winter Park, CO

NO SMOKING
IN CORRALS
OR ON LIFTS

Eagle Wind

Eagle Wind
Locator



Ski Patrol
OPEN DOOR AND PUSH
RED BUTTON FOR PATROL

INSTRUCTIONS
AND WARNINGS

- If unfamiliar with lift ask attendant.
- Lift does not stop or slow unless requested.
- You should have the physical ability, ability & knowledge to safely load, ride & unload the lift.
- Retention devices are required to ride on our mountain.
- Snowboarders lower your back binding.



REMOVE
POLE STRAPS
FROM WRISTS
UNLOADED



CHECK FOR
LOOSE CLOTHING
AND
EQUIPMENT

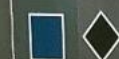


LOADING
SEAT HEIGHT
22" ± 2 INCHES



NO LOOSE
LOOSE SC
LONG HAIR EXPOSE

This Lift Serves:



To Eagle Wind Trails & Parsenn Bowl

9.1 minute ride time

To Elevation: 11,495'

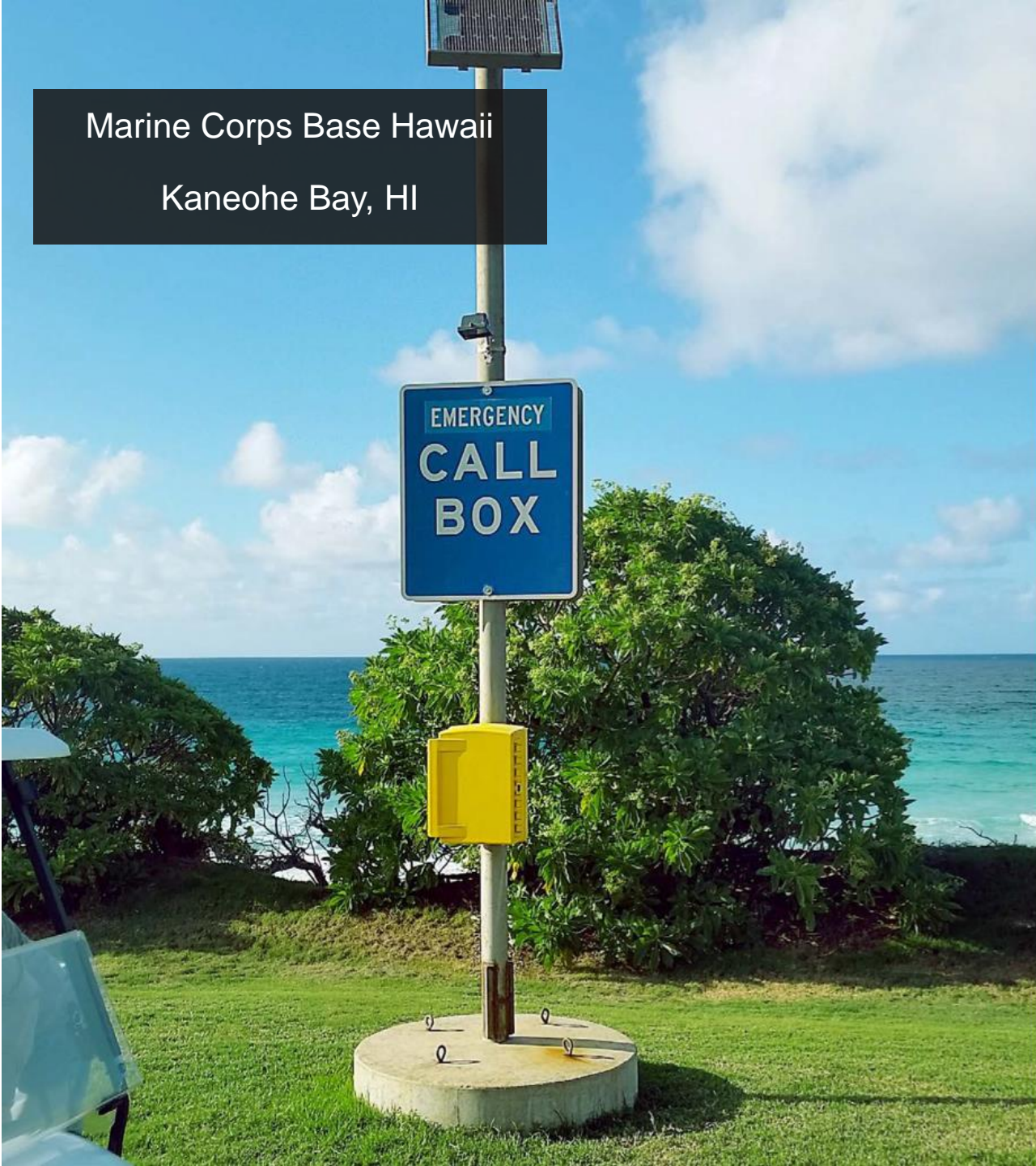
Services:

This lift closes at 2:

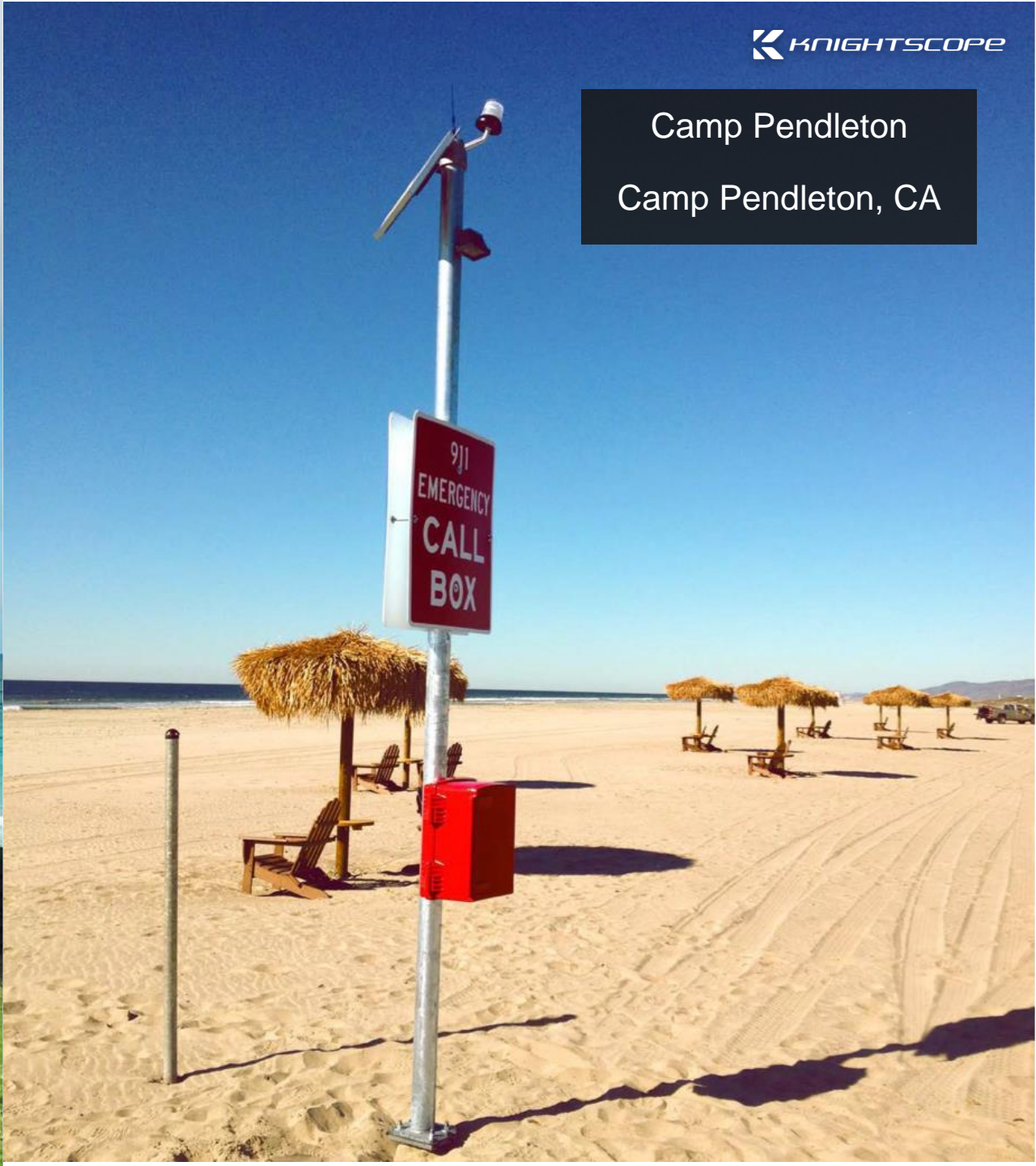


PION

Marine Corps Base Hawaii
Kaneohe Bay, HI



Camp Pendleton
Camp Pendleton, CA



Questions?



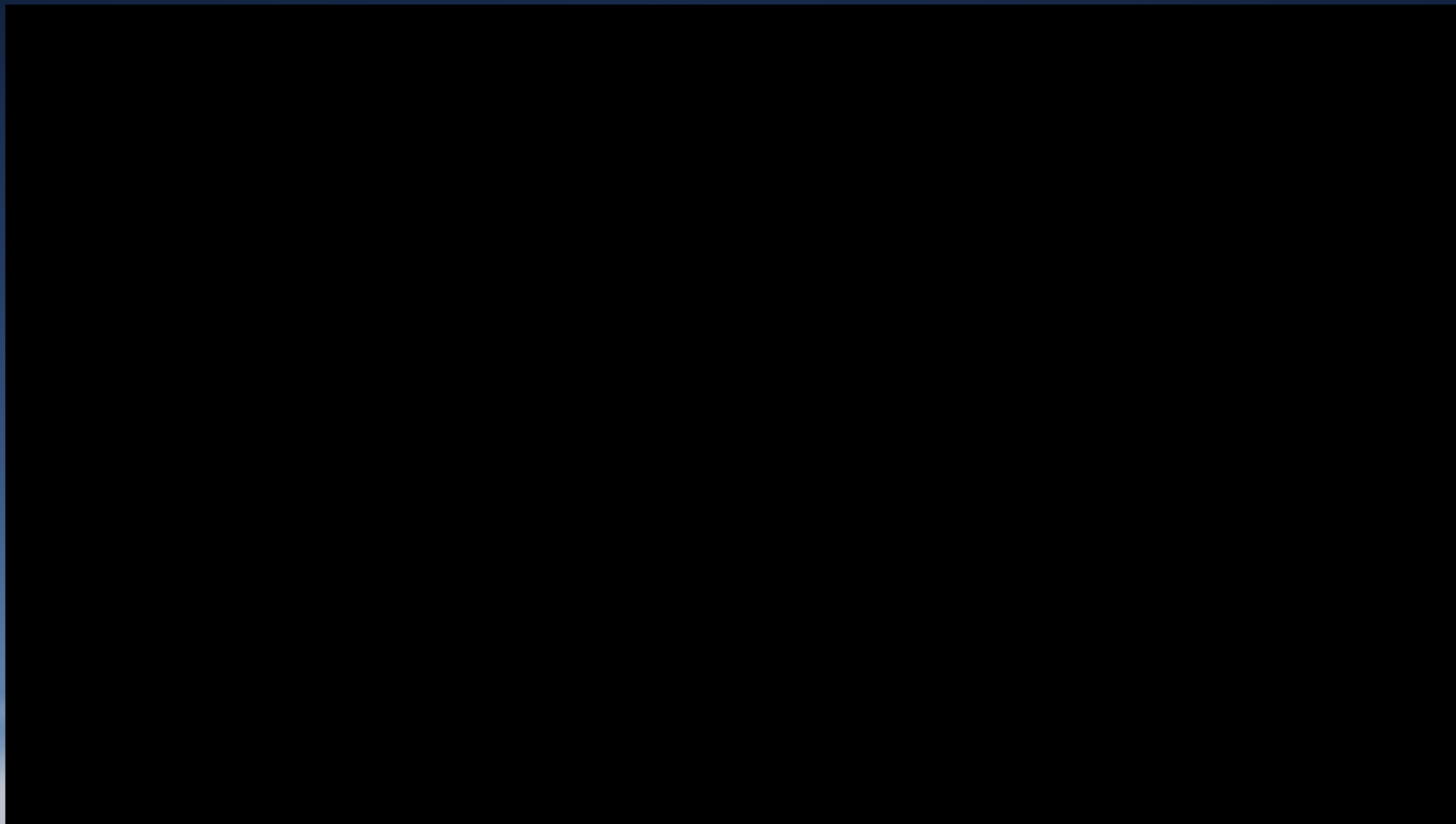
Paul Lindsey

Director Client Development

pal@knightscope.com

(309) 370-5855

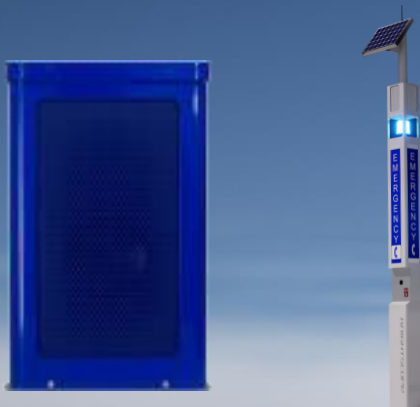
DART INSTALL DEMO



MODULAR DESIGNS

MASS NOTIFICATION SYSTEM

- Broadcast pre-recorded messages using your existing Mass Notification Service
- Networks with other MNS Blue Light Tower for extended coverage
- 106 dB @ 5'
- Compatible with **Blue Light Tower**



FACEPLATE CAMERA

- Snaps pictures during call box use
- Picture and recorded audio are stored for review
- Compatible with **Blue Light Tower & E-Phone**



TTY PAD

- Allows non-verbal call box users to communicate
- ADA Compliant
- Compatible with **Lexan Call Box**



DATA INTENSIVE PHONE FEATURES

- KNIGHTSCOPE is always designing features to expand phone capabilities
 - Faceplate Camera
 - Wireless Mass Notification Broadcasting
 - And more



On a
Wireless
Platform





Wireless Mass Notification System

- Integrates with your current system



- Completely Wireless
- No License Fees
- Has Dual Functionality
 - Wide Area Broadcast
 - Individual Broadcast

ADDITIONAL PRODUCTS

UPGRADE KIT



- Upgrades your legacy call boxes
- 4G Cellular Calling
- Self-Monitoring Software
- Compatible with: **Code Blue, GAI-Tronics, Talk-A-Phone, and others**

DIAGNOSTICS TABLET



- Comes preloaded with custom call box diagnostic software for troubleshooting

SELF-DIAGNOSTIC SOFTWARE

Sample Email Alert

From: Duane Rumski
Sent: Tuesday, April 14, 2020 6:51 AM
To: Peggy Nebriaga
Subject: WESTCHASE CASE Alert for Apr/14/2020

CASEAlert

Project: WESTCHASE DISTRICT TX
Emergency Phones . . . 11
Failed to Check in . . 0
Alarms 1
Legend:
High Priority
Medium Priority
Low Priority

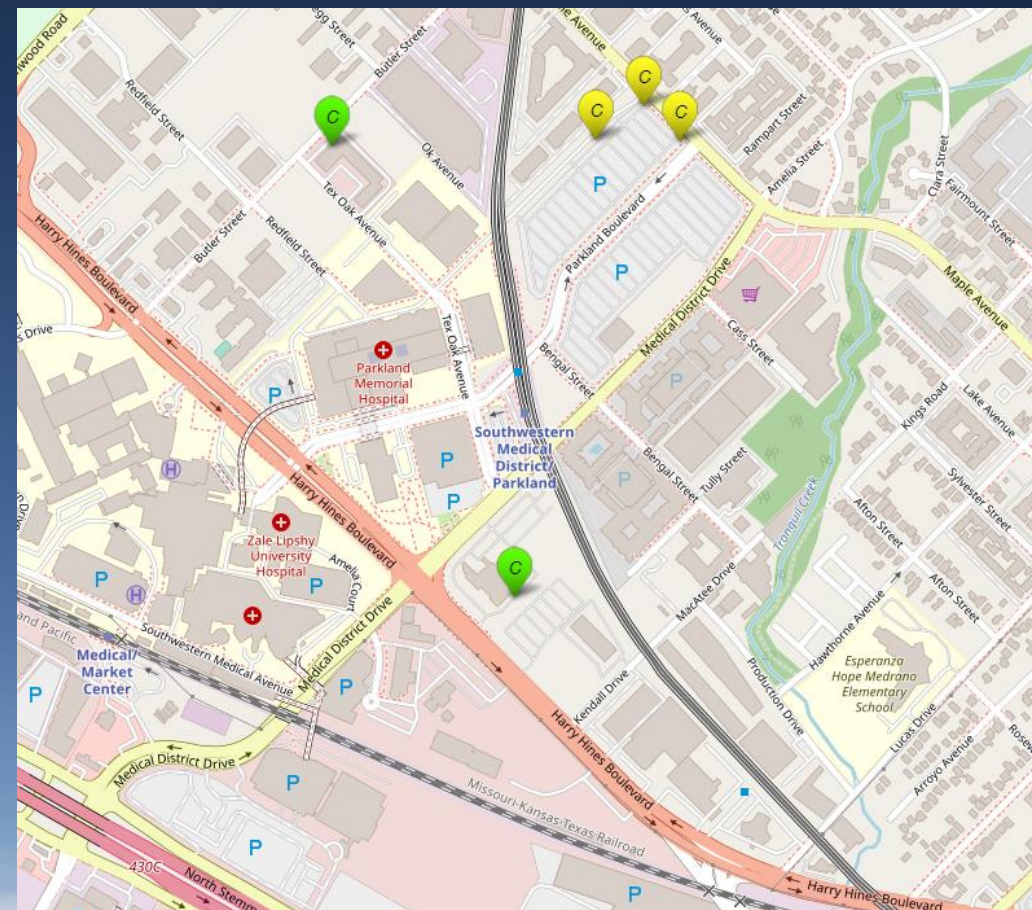
Alarms Registered 04/14/2020

ANI	Date	Location	Alarm
6018	04/14/20	Tower 9 * WESTCHASE-BB1 3119 WALNUT BEND LN	Audio Error

CASE Project Manager
Joe Garcia
CASE EMERGENCY SYSTEMS

CONTACT INFO
Direct: 909.953.7701 | HQ: 949.988.7500
JGarcia@casees.com | WWW.CASEEmergencySystems.com

Sample Map



WIRELESS VS HARDWIRED



WIRELESS

Knightscope Blue Light Tower emergency phones receive power from the sun and communicate with cellular technology, so they don't require additional digging/cabling.



Wireless towers can be installed in even the most remote areas without limitations.



DURABILITY

KNIGHTSCOPE products are simply built to last.
This KNIGHTSCOPE call box is functional even after enduring the July 2018 Cranston
Fires in Idyllwild, CA.



Blue Light Tower Placement Guide

Sun Exposure

For solar powered emergency phones please look for any obstructions that may block the exposure of sun to the solar panel i.e. Trees, tall buildings or anything with height that can shade the solar panel.

* Minimum of 6 hours between 9AM to 3PM.



Click on Image for
Link to a Placement
Guide

ONE STOP SHOP

Field Application Review

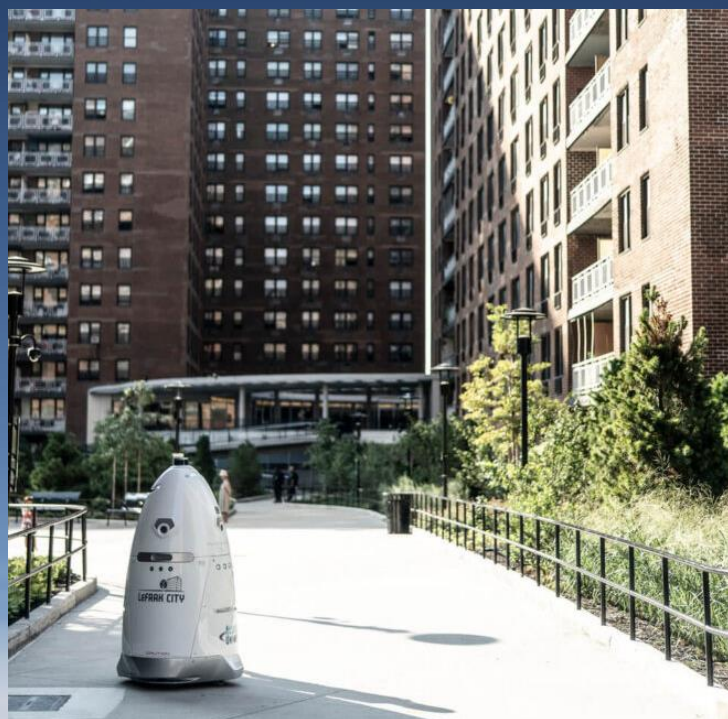
Engineer Design Services

Installation, Maintenance & Monitoring

Parts Replacement & Training

TOP USE CASES

- Disrupt criminal behavior
- Deter vagrancy, trespassing & unauthorized visitors
- Secure parking lots & structures
- Enhance employee and public experience & safety
- Mitigate workplace violence
- Patrol hard to reach and previously neglected spaces
- Reduce security spend



K5 Outdoor / Indoor



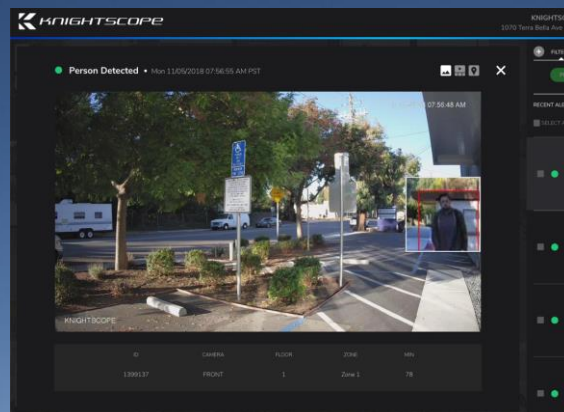
K3 Indoor



AUTONOMOUS SECURITY ROBOTS



Autonomous Self Charging



User Interface

STANDARD FEATURES

- 360° Eye-level Ultra HD 4k Recording*
- 30 Days Video Storage
- 16 Microphones w/ Amplified Speaker
- Two-way Intercom
- 4G Cellular Communication
- Requires 110V AC Power
- Patrols on ADA Compliant, 5' wide paths
- Vehicle and parking inclines/declines:
Up to 20% slope "grade"

Autonomous Recharging (K5 & K3)

- Patrol time: 2 to 2.5 hours
- Autonomous charging: 20 to 30 minutes

*720p on K3

A NEW OPTION TO DETER CRIME

K1 HEMISPHERE

- 210° Eye-level High-Definition Recording
- Call Button for Human Assistance
- Live Audio and Two-way Intercom
- Autonomous Broadcast Messaging
- Automatic License Plate Recognition
- People Detection up to 50 ft.
- Facial Recognition (no cost option)
- Strobe Light (650+ Lumens)



WE DELIVER RESULTS

BEFORE	AFTER
Los Angeles County Police Department	
48 Reports of Crime 120 Citations	26 Reports of Crime (46% reduction) 38 Citations (68% reduction)
Downtown San Francisco Parking Structure	
Averaged 20 Crimes per Month	2 Crimes in 12 Months (99% reduction)
Major Hospital Network	
Average 2 Crimes per Week in Parking Lots	Zero Crimes in the First Year (100% reduction)
Las Vegas 640 Unit Multi-Family Housing Complex	
Top 3 List for 911 Calls per Las Vegas Metro PD	Off the Top 10 List for 911 Calls
Santa Clara Towers, Class A Commercial Property	
Averaged 10 Vehicle Break-ins/Vandalism per Month	Reduced 90%
Aloft Hotel	
Frequent Vandalism from Nearby Homeless Encampment	Zero Incidents (100% reduction)

TESTIMONIALS

The police department reported a significant decrease in crime in the initial 7 months

- 46% Reduction in crime reports
- 68% Reduction in citations

“A patrol officer cannot do what modern technology can.”

“The robot is here to enhance our delivery of police services.”

- Cosme Lozano, Chief of Police

<https://www.youtube.com/watch?v=6dIOXyFQull>

Huntington Park Police Department Success Story Southeast Los Angeles, CA



TESTIMONIALS

“We were having a lot of issues with vandalism from homeless encampments in the area.”

“We haven’t had any incidents in the last four or five months”

- Mike Daley, Area General Manager

<https://katu.com/news/local/robot-helps-northeast-portland-hotel-cut-down-on-vandalism>

Aloft Hotel Success Story

Portland, OR

Robot security guard helps prevent vandalism, car break-ins at Northeast Portland hotel



TESTIMONIALS

Santa Clara Towers Success Story

Santa Clara, CA

“The Robot has improved our site safety significantly! We have seen dramatic changes since we deployed the robot”

“The property vandalism/car break-ins have reduced by 90%.”

- Tatiane Martins, Hines Property Manager



“Rovie K-Nueve has improved our site safety significantly! We have seen dramatic changes since we deployed the robot: the property vandalism/car break ins have reduced by 90%. The Robot joining the security officers' crew, has helped the Property, the Security Officers and SCPD tremendously. The break ins reduced from 10 a day to once or twice a month.”

Tatiane Martins

Property Manager
Santa Clara Towers