

# HD “Mirrorless” Monitor

optional DVR available

## Operation Manual



Enhance Driver Performance.  
Save 2% on Annual fuel cost\*  
Reduce Accidents.  
Eliminate Blind-spots.  
Protect your Drivers and fleet.





# Contents

1. Contents/Warranty.....	1
2. Preface.....	2
3. Specification.....	3
4. Keystroke/Remote.....	4
5. Menu Operation Instruction.....	5
6. Menu Operation Instruction.....	6
7. Menu Operation Instruction.....	7
8. Menu Operation Instruction.....	8
9. Menu Operation Instruction.....	9
10. Cable.....	10

## Warranty

Thanks for use our products, we will offer the below service:

1. 12 months free charge maintenance warranty.

While below status, we will charge maintenance cost:

- 1) Can't offer purchase invoice;
- 2) Invoice was changed by buyer;
- 3) Accident or human damage;
- 4) Leader wire was cut down;
- 5) Product was opened without discuss with us;
- 6) More than warranty period.

# Preface

Thanks for your support. Our company stick the management philosophy of “Quality First, Honest Based!” , and based on meeting customer’s requirement and supplying high quality products, perfect after-sales service as our purpose, be absorbed in offer the best products.

To ensure long-term trouble-free service of the products, please read this manual carefully before using the product.

Notes:

1. Do not try to open the covers. It is a high precision product. Please close the power in time if anomalies.
2. Do not use organic solvent clear the covers, to avoid it peel off painting.
3. Do not enforce to the lead wire., to avoid damage or poor connect.
4. Keep the product out of the dirty, direct sun, high temperature and humidity condition.
5. Protect the product from fall down and shock.
6. Please wiring as diagram strictly, if wiring wrong will lead product can’t work and even damage vehicle electrical system.
7. Do not use any affect operation of driving.
8. Do not let the product working at higher or lower than the suitable temperature of machine.



For the sake of safety, please do not watch the video while driving, except driving assist video!

# Specifications

Screen Size	12.3" (8:3)IPS
Resolution	1920RGB (H) xRGBx720(V)
Brightness	850cd/m <sup>2</sup>
Contrast	800:1
Viewable area	292.032(H)x109.512(V)mm
View angle	85/85/85/85
System	NTSC/PAL
Video Inputs	3 way video inputs, 2 way trigger wires
Voltage	DC12V~36V (With undervoltage, over voltage, overload, short circuit, reverse protection)
Working Temperature	-20° C~+70° C, Maximum humidity 95%
Storage Temperature	-30° C~+80° C, Maximum humidity 95%
Storage	Max support for TF card 256G video recording
Video input	Two way video inputs, one way trigger wire
Video	Support CVBS/AHD720P/960P/1080P/Mix
Display mode	Built-in 12 multi-screen combination display modes, which can be set as the default boot screen to meet the special needs of different users (four-way mode)
Image control	Each channel mirror/normal; Brightness etc
Function	Video files can be played back online or backed up to a computer
Record	Loop video, auto overwrite, important video files can be set lock protection, Lock files will not be overwritten delete
Optional	Four way video optional
Operation Mode	6# Remote control/Keystroke
Connector	Aviation
Dimensions	335(L)x145(W)x38(T)

# Keystroke



Power on/off

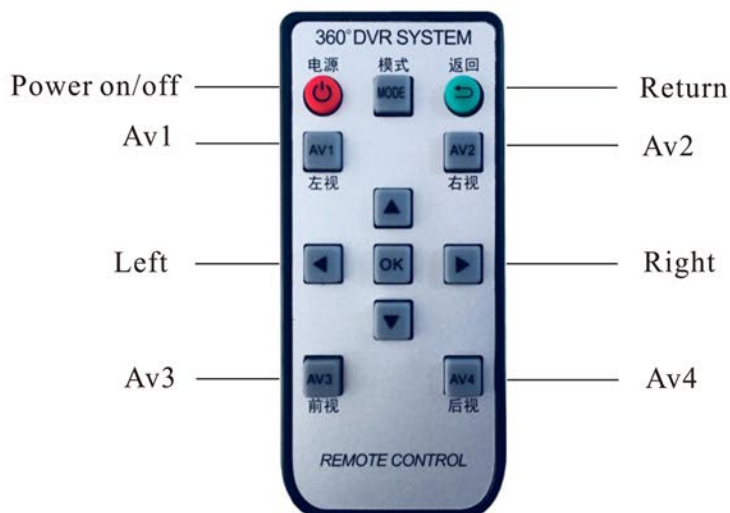
Move

Menu

Move

AV switch

# Remote control



# Menu Operation Instruction

Remote control press“OK”button(Monitor press“M”button), screen will show OSD menu as below.

Press▲ cursor down, ▼ cursor up, press ◀ cursor left, press ▶ cursor right;

Press“AV”enter the option;

Press“M” return to previous menu



## Record



1) Refer by date: Display stored video files

a. The last 3 days; b. The last week; c. The last two weeks; d. Last month; e. All

2) Backups: Video file backup (need to add USB interface)

3) Unlock: Unlock the video file

4) Lock: Lock the selected video file to protect it from being overwritten by the device

5) Previous page: Switch to display previous page video file

6) Next page: Switch to display next page video file

7) Playback: Play the selected video files online;

(support fast forward, fast rewind, pause, etc.)

# General Setting



After completing the Settings, you must select "confirm" to save and exit, if directly return or exit, the settings invalid (except time and date).

- 1) Date Time: Modify the system time and date which displayed on the screen
- 2) Date Format: Switch the display format of date: year/month/day
- 3) Video Output Format: PAL/NTSC
- 4) Language: English/Chinese(Support for customizing other languages)
- 5) Time show: Time, Date on screen Enable/Disable
- 6) Resolution: 1024\*768 / 1280\*720 / 1920\*1080 / (Current display)
- 7) Video Record Image Quality — Ordinary / High-definition / Super high-definition

Video Record Image Quality	File size 10min	8G	32G	64G	128G	256G
Ordinary	110M	12hr	48hr	96hr	192hr	384hr
Standard	220M	6hr	24hr	48hr	96hr	192hr
High-definition	330M	4hr	16hr	32hr	64hr	128hr
Super high-definition	440M	3hr	12hr	24hr	48hr	96hr

- 8) Vehicle information - add license plate number on screen



# Control Setting



## 1) Video output/Display mode

a. Always output: displayed all the time after starting up

b. Trigger display: Monitor show image when trigger

c. Intelligent output: displays the screen after starting up, and automatically shuts down after no operation for 15 seconds

2) Turn light(Trigger display when monitor standby): Enable/Disable

3) Frame Color: Gary/Black/Red/Green/Blue/None

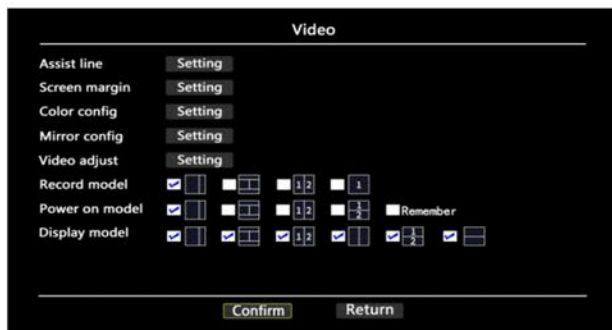
4) Record for park: 10mins/30mins/1hr/2hr/6hr/12hr/24hr

Time-lapse video recording function (do not open all the time to avoid battery loss)

5) Audio: Disable/Camera/MIC

6) Channel title: Enable/ CH01/CH02

# Image Setting



# Image Setting

Direct return and exit after adjustment;

## 1) Assist Line(Guide line)

Independently adjust the position and length, colour of guide line in each channel



## 2) Screen Margin (Image size)

The margins around the output video are compressed inward, which is suitable for full screen display on various display screens.



## 3) Color config

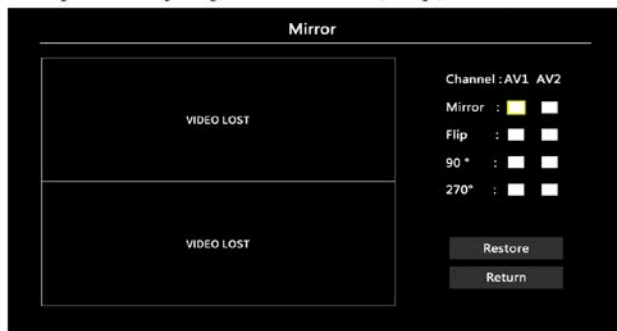
Independently adjust the brightness, contrast, chroma, saturation, sharpness in each channel



# Image Setting

## 4) Mirror config (Image flip)

Independently adjust the mirror, flip, 90°, 270° in each channel



## 5) Video Adjust (screen display image size adjustment)

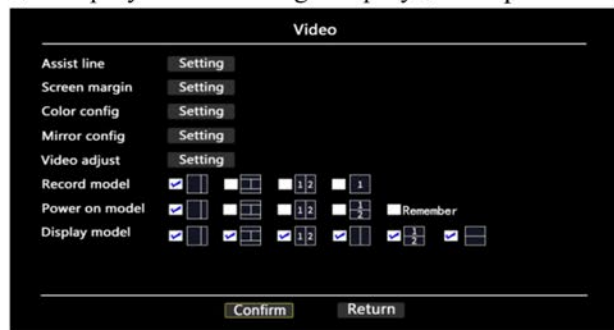
Independently adjust the screen display range of each channel



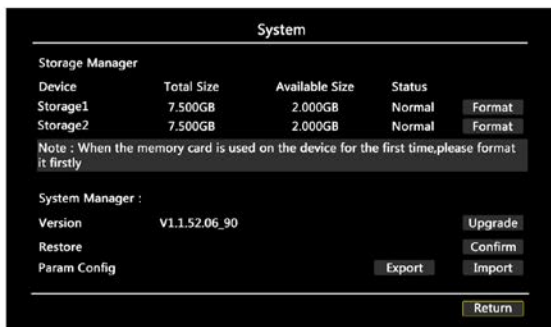
## 6) Record model: Select the image mode to store the video file (Quiz)

## 7) Power on model: Select boot default display model (Quiz)

## 8) Display model: Image display (multiple choice)

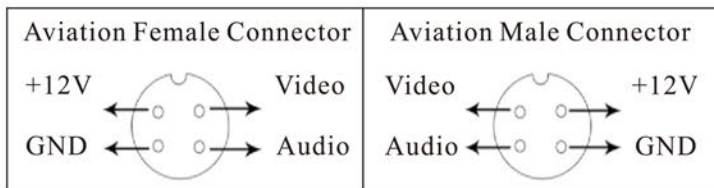


# System Setting



- 1) Format: format memory card (the first insert card must be formatted)
  - 2) Upgrade: upgrade the product(Look Don't Touch)
  - 3) Restore: Restore the product to the factory default
  - 4) Param Config
- Export: export the current device parameter Settings to the memory card  
Import: import the parameter configuration of memory card into the system of this device

## Cable



## Aviation Connector

